

REVIEW

Open Access



Towards portable MRI in the plant sciences

Shannan Blystone^{1,2,3†} , Magali Nuixé^{1,2,4†} , Amidou Sissou Traoré^{1,2} , Hervé Cochard³ ,
Catherine Picon-Cochard⁴  and Guilhem Pagés^{1,2*} 

Abstract

Plant physiology and structure are constantly changing according to internal and external factors. The study of plant water dynamics can give information on these changes, as they are linked to numerous plant functions. Currently, most of the methods used to study plant water dynamics are either invasive, destructive, or not easily accessible. Portable magnetic resonance imaging (MRI) is a field undergoing rapid expansion and which presents substantial advantages in the plant sciences. MRI permits the non-invasive study of plant water content, flow, structure, stress response, and other physiological processes, as a multitude of information can be obtained using the method, and portable devices make it possible to take these measurements in situ, in a plant's natural environment. In this work, we review the use of such devices applied to plants in climate chambers, greenhouses or in their natural environments. We also compare the use of portable MRI to other methods to obtain the same information and outline its advantages and disadvantages.

Keywords Cavitation, Flow, Low-field NMR, Plant physiology, Relaxation times, Structure, Water

Introduction

Plant physiology and structure are constantly changing according to phenology, environmental conditions, or exposure to biotic or abiotic stress. The study of plant water dynamics can give information on these changes, as they are linked to numerous plant functions. Photosynthesis, the fixation of atmospheric carbon, which is requisite to plant growth, implies heavy water consumption. For every mole of CO₂ sequestered as a result of photosynthesis, around 200 mol of water are lost to

transpiration through stomata that are open for gas exchange [1]. Thus, a plant must balance its need for CO₂ with the water loss that necessarily occurs with its uptake. To fulfil this need, water travels through a soil-plant-atmosphere continuum, where it is absorbed from the soil by the roots, and then is transferred to other plant organs through the xylem. The xylem carries water to the leaves, where photosynthesis uses water as a reactant and produces carbon-rich sugars, then it enters the atmosphere as water vapor through the stomata. Meanwhile, the carbon-rich sugars are transported by the phloem and distributed to the plant's organs and carbon sinks. The coupling of the water and carbon cycles is at the foundation of plant ecological and physiological functioning and renders the understanding of plant water dynamics vital.

One of the difficulties in the plant sciences is being capable of measuring plant water dynamics non-invasively and in a plant's natural environment, i.e., in situ. Nuclear magnetic resonance (NMR), and its imaging counterpart, magnetic resonance imaging (MRI), provide a suitable way to non-invasively assess plant water status throughout the plant's life cycle, and portable devices

[†]Shannan Blystone and Magali Nuixé contributed equally to this work and share first authorship.

*Correspondence:

Guilhem Pagés
guilhem.pages@inrae.fr

¹ Université Clermont Auvergne, INRAE, UR QuaPA,
63122 Saint-Genès-Champanelle, France

² INRAE, PROBE research infrastructure, AgroResonance facility,
63122 Saint-Genès-Champanelle, France

³ Université Clermont Auvergne, INRAE, PIAF, 63000 Clermont-Ferrand,
France

⁴ Université Clermont Auvergne, INRAE, VetAgro Sup, UREP,
63000 Clermont-Ferrand, France



offer the possibility of taking measurements in a plant's natural environment. Recently, reviews have been published addressing the use of this technique in the agricultural and food sciences [2, 3]. Herein, we present the utility of studying water in plants with portable MRI by looking at the different parameters that can be measured with the method, such as plant water content, xylem and phloem flow, plant structure, physiological changes, and disease progression. We then compare the use of portable MRI to other available methods to measure the same parameters. We use the term “portable MRI” to refer to any device that can or could be transported into the field and the term “laboratory MRI” to refer to any device that cannot be transported. This review is limited to the use of portable or potentially portable devices applied to the scale of individual, intact plants in climate chambers, greenhouses, or outdoors, and to the study of detached plant organs offering physiological insight into whole-plant processes.

Overview of NMR/MRI

MRI is the analytical technique of choice to study water and its properties without ionizing or degrading the object. In this section, we will present a brief overview of the basics of NMR and MRI. As we will not explain the physical principles, the interested reader can refer to any textbook.

Hydrogen nuclear magnetic resonance is based upon the magnetic properties of hydrogen nuclei, also called protons. When placed inside a magnetic field (B_0) and excited by a radiofrequency pulse at the specific nucleus resonance frequency, an NMR signal can be detected. This signal can be described as a decay (Eq. 1) characterized by two relaxation times, the longitudinal relaxation time (T_1) and the transverse relaxation time (T_2).

$$S(t) \propto \left(1 - \exp^{-t/T_1}\right) \left(\exp^{-t/T_2}\right) \quad (1)$$

Longitudinal relaxation corresponds to the return of the magnetization to its equilibrium state in the longitudinal plane, which is the direction of B_0 . T_1 is the time it takes to recover 63% of the initial magnetization along the longitudinal axis. Transverse relaxation corresponds to the dephasing of the spins and depends on the interactions of the spins with their environment. T_2 is the time required for the NMR signal to decrease by 63% of its initial value in the transverse plane. Water molecules bound to macromolecules or surfaces will exhibit shorter relaxation times than more freely moving water molecules. As measured relaxation times also depend on the magnetic field, care should be taken when comparing studies,

and only the order of magnitude of the values should be compared. Relaxation times measured in plants generally range from a few milliseconds to a few hundred milliseconds.

Magnetic resonance imaging allows the imaging of water by adding spatial information. The NMR signal is directly proportional to the quantity of water within the measured zone, making it possible to obtain an image of the distribution of the water concentration (also called proton density) in the sample. Magnetic resonance techniques also permit the analysis of the interaction of water with tissues. Using magnetic resonance, it is possible to obtain relaxation time spectra, to create images weighted by these relaxation parameters, or to obtain quantitative images of these relaxation parameters, i.e., the value of a given parameter (e.g., T_2) is assigned to each voxel of an image. Such parametric images permit the study of organ or cell structure [4, 5]. Magnetic resonance techniques also offer the possibility of studying water dynamics. To do so, protons are spatially labelled (non-invasively by using a pulsed field gradient) and either the apparent diffusion coefficient (ADC) or the probability of the average velocity of flowing water can be measured (Fig. 1). Thus, by studying the water within a plant through a variety of different magnetic resonance approaches, one can gain a multitude of information, not just on water content, but also on plant structure or physiological processes, such as stress response or the progression of a disease. For example, laboratory MRI has long been used to measure the water dynamics in plants, follow growth, or understand plant structure [6–9]. The main advantage of laboratory MRI is that the stronger magnetic fields make it more sensitive, yielding a better signal-to-noise ratio (SNR). However, these instruments are expensive to maintain and are not portable. The incapacity to measure plants in situ has rendered laboratory MRI a tool of limited use in the plant sciences as the environment of a plant is primordial to its physiological functioning.

To measure plants in their natural environment, a portable device must be used. Such instruments exist but are mostly made in-house. As lightweight magnets must be used, the magnetic field strengths of portable devices are generally lower than 1 T, commonly referred to as low-field devices. The spatial resolution of such devices can range from $\sim 100 \mu\text{m}$ [10, 12] to a couple of millimeters [13], while the temporal resolution can range from minutes to a few hours, depending upon the experiment. The balance between spatial and temporal resolution depends largely on the SNR, which is lower in portable devices due to the lower magnetic field strength. Another challenge with portable devices, beyond reducing magnet size, is optimizing magnet shape for a variety of samples. C-shaped, U-shaped and Halbach magnets enclose the

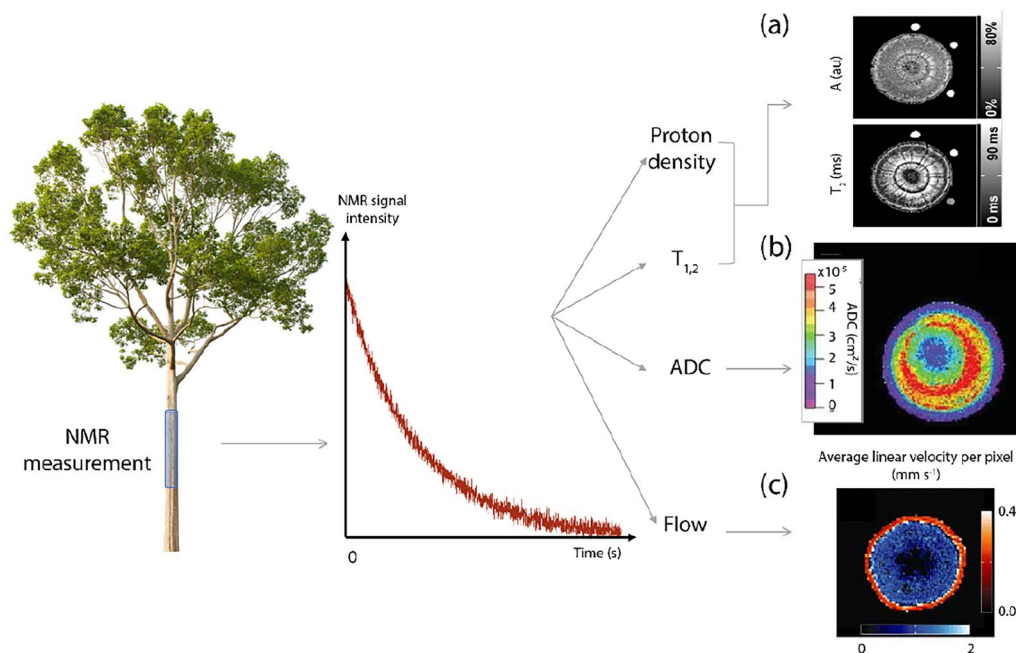


Fig. 1 According to the weighting of the NMR decay, different parameters can be measured such as proton density, longitudinal (T_1) and transverse (T_2) relaxation times, diffusion (ADC) and flux. Subset (a) represents proton density and T_2 maps acquired on a *Fagus sylvatica* stem (Adapted from [10] with permission from Wiley). Subset (b) represents an ADC map acquired on a pear tree (Adapted from [11] with permission from AIP Publishing). Subset (c) represents an example of flux measurements. It corresponds to the average linear velocity map of a poplar tree stem (Adapted from [12] with permission from Blackwell Publishing Ltd). The red scale corresponds to the velocity measured in the phloem, while the blue scale corresponds to the velocity measured in the xylem

magnetic field, offering field homogeneity, and Halbach magnets in particular offer the highest field strength per mass of material. However, all these magnets are limited by their internal diameter and accessibility. Unilateral magnet designs have the advantage of being able to accommodate samples of any size and shape, however, the measurement depth is limited so that only a small part of a larger sample can be measured. Magnet choice is thus a compromise between the desired resolution, portability, and accessibility, and an ideal magnet will depend upon the experiment and the sample. Portable magnets have been developed that are suitable for outdoor environments, and previous works have shown that portable MRI stands as an interesting analytical tool to investigate water status and movement in plants in situ. In this review, we will discuss some of these works and show how studying water in plants with MRI can give information on plant water content, and also xylem and phloem fluxes, anatomy, growth, stress response, disease, and other physiological processes. We will then compare portable MRI to alternative methods to obtain the same information.

Overview of methods to study water in plants alternative to MRI

In this section, we will briefly review some of the most commonly used methods to measure water content, plant structure, xylem and phloem flow, and cavitation. We consider a method as non-invasive when it does not entail equipment entering the sample body or otherwise damaging the plant. We consider a method as destructive when the sample is destroyed after use of the method and no longer viable for future measurements.

Water content can be measured by taking fresh and dry weights of plant matter [14]. From the fresh and dry weights and the inclusion of turgid weight as a variable, one can directly estimate a plant's relative water content (RWC). This method normalizes data to account for differences in morphology between plants. Water content can also be estimated using near infrared spectroscopy (NIRS). NIRS is based upon the absorption of NIR light by a sample. Light is absorbed in a wavelength region depending upon the composition of the sample, and this permits the acquisition of a spectrum with peaks indicating the quantity of certain components, such as water [15]. Terahertz (THz) spectroscopy is also capable of measuring water content non-invasively, and functions by applying pulses of THz radiation to the sample and

analyzing its transmission. As water is a strong absorber of THz waves, the THz spectrum correlates to the quantity of water in the sample [16].

To study plant structure, standard methods include dye tracing, microscopy techniques, X-ray tomography [17, 18], neutron radiography [19–21], air-coupled ultrasound [22], laser-based guided waves [23], and 2D-light transmission [24, 25]. Dye tracing has been used to study plant structure for almost a century [26], and functions by staining certain anatomical structures, and the distribution of dyes can be observed either macroscopically or under the microscope. Microscopy techniques are also well established and can be used to study microstructures within a certain depth. X-ray radiography and tomography rely upon the attenuation of X-rays passing through the sample, which is rotated throughout the measurement process, permitting the reconstruction of 2D or 3D images. This technique can yield very high-resolution images, with synchrotrons having the capacity to produce images with resolutions in the nanometer range. Neutron radiography and tomography rely upon similar principles as X-ray radio/tomography, producing images through the attenuation of neutron beams passing through the sample instead of X-rays. As neutrons interact with nuclei and x-rays with electrons, these two methods produce different images. Air-coupled ultrasound produces non-invasive structural images via the analysis of ultrasonic wave propagation through the sample, allowing the observation of thickness resonances. Air-coupled sensors allow this method to be performed without coming into contact with the sample [22]. Laser-based methods using guided waves can give information on structure by studying the propagation of pulsed laser-induced waves within the sample [23]. The mechanical properties of plants that can be elucidated via both guided wave techniques and air-coupled ultrasound can be linked to plant water status. Finally, 2D light transmission can be used to generate images of root structure based upon the attenuation of visible light through a translucent soil medium as areas of higher water content will transmit more light.

Xylem flow can be measured in several ways. Dye tracing [27] can be used to measure xylem flow velocity by observing the time taken for dye to cross two points on a trajectory. By irrigating plants using water labeled with deuterium, xylem velocity and dynamic water distribution can be measured. Information on xylem flow can also be obtained with sap flow meters that are placed around stems and which function using a variety of heat pulse-based methods. Non-invasive methods exist such as gravimetric analysis which consist of following the evolution of the weight of potted plants to measure the loss of water by transpiration, considering the evaporation of the soil by covering it. Porometers can non-destructively

provide indirect estimates of whole plant transpiration by measuring stomatal conductance at the level of the leaf.

Established and reliable methods to measure phloem flow are less numerous. ^{11}C PET imaging can be used to follow the flow of radiotracers in order to obtain information about phloem [28, 29]. This technique extrapolates flow information by measuring the time it takes for radiotracers to pass two points along a pathway. Phloem flow rate can also be estimated by exploiting the ability of aphids to penetrate phloem tissues in certain plant organs [30]. By using radiolabeled CO_2 and placing several aphid stylets along a plant organ, one can extrapolate pressure differences which can be used to calculate phloem flow rate.

There are a couple of methods used to measure cavitation uniquely. One of these methods, developed in our laboratory (PIAF, INRAE), uses a xylem embolism meter, the XYLEM device, to study the relationship between xylem conductance and cavitation [31]. The level of cavitation of a branch can be estimated by measuring the conductivity of water moving through the branch just after being cut, and then on the same branch at full saturation after removing the air bubbles. There are methods using the production of acoustic emissions to measure cavitation. These rely on detecting sounds in the ultrasonic frequency range which are produced by the plant during dehydration and relating these sounds to the hydraulic conductivity of the plant [32].

Measuring water content and imaging plant structure with portable MRI

MRI techniques are not only non-invasive and direct, but they are versatile. For example, the quantity of water within each voxel can be measured by using quantitative MRI, and information about plant structure can be obtained using relaxation-weighted MRI. This is possible because, as previously evoked, the MRI signal is directly related to water content, and relaxation times give information on the environment of water molecules. For instance, using relaxation times, T_2 -weighted maps make it possible to observe different tissue compartments, at the intracellular or intratissue scale. This has been demonstrated in the plant sciences using portable MRI devices, primarily on deciduous tree branches [10, 33, 34] and fruits [35]. Growth rings, xylem, and phloem distribution have been successfully imaged. Jones et al. developed a portable MRI system called the Tree Hugger which successfully imaged tree stems, and was sensitive enough to capture both diurnal and seasonal variation [36]. This device also managed to capture variation of water content within the trunk, putting in evidence “grain rotation” where water flows through the trunk in a spiral. It has also been demonstrated that portable MRI is

capable of measuring the water content of leaves, as well as studying how leaf water content evolves diurnally and in the context of hydric stress [37]. At the level of underground plant organs, the difference in relaxation times between the soil and the roots permitted the direct imaging of roots within intact soil and to observe their distribution [13, 38]. Figure 2 shows how proton density measurements and T_2 relaxation times can be used to create weighted images, and these images are comparable to what can be obtained with microscopy.

Measuring sap flow and physiological processes with portable MRI

Sap flow

Both laboratory and portable MRI are exceptionally interesting tools to measure sap flow because they enable the measurement of both the xylem and phloem fluxes by yielding a probability of flow rate, called a propagator,

as seen in Fig. 3e. This is acquired by spatially labelling water molecules and then measuring their displacement per unit of time. Laboratory MRI velocimetry has been used to measure xylem flow for decades, in addition to phloem flow, with the limitation that it cannot be taken into the field [6, 39]. The feasibility of using portable or potentially portable devices has already been demonstrated. Van As et al. performed the first measurements on plants with a portable MRI device in 1994 and demonstrated that flow and T_2 relaxation times varied with light intensity [40]. Also using portable devices, Windt et al. measured the xylem and phloem fluxes in the stems of four different plant species: poplar trees, tomato, tobacco and castor bean [12]. They were able to observe that the speed, i.e., the average velocity, of the phloem was not very substantial compared to the xylem, regardless of species, measured between 0.25 and 0.40 mm s⁻¹, while that of the xylem was higher and more differentiated,

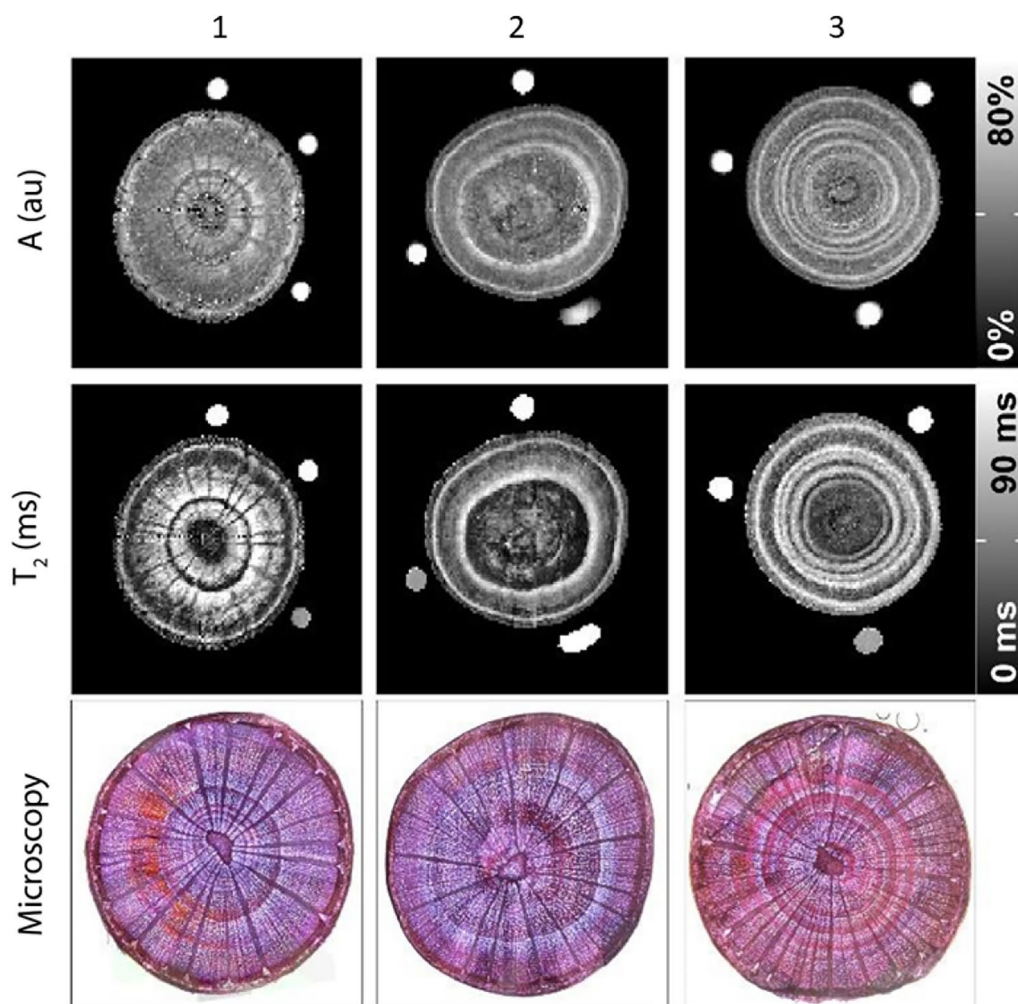


Fig. 2 Proton density (A) and transversal relaxation time (T_2) maps acquired with a 0.25 T-MRI, and microscopy images of the stem of three *Fagus sylvatica* samples (1–3). The proton density is related to water content (%) (Adapted from [10] with permission from Wiley)

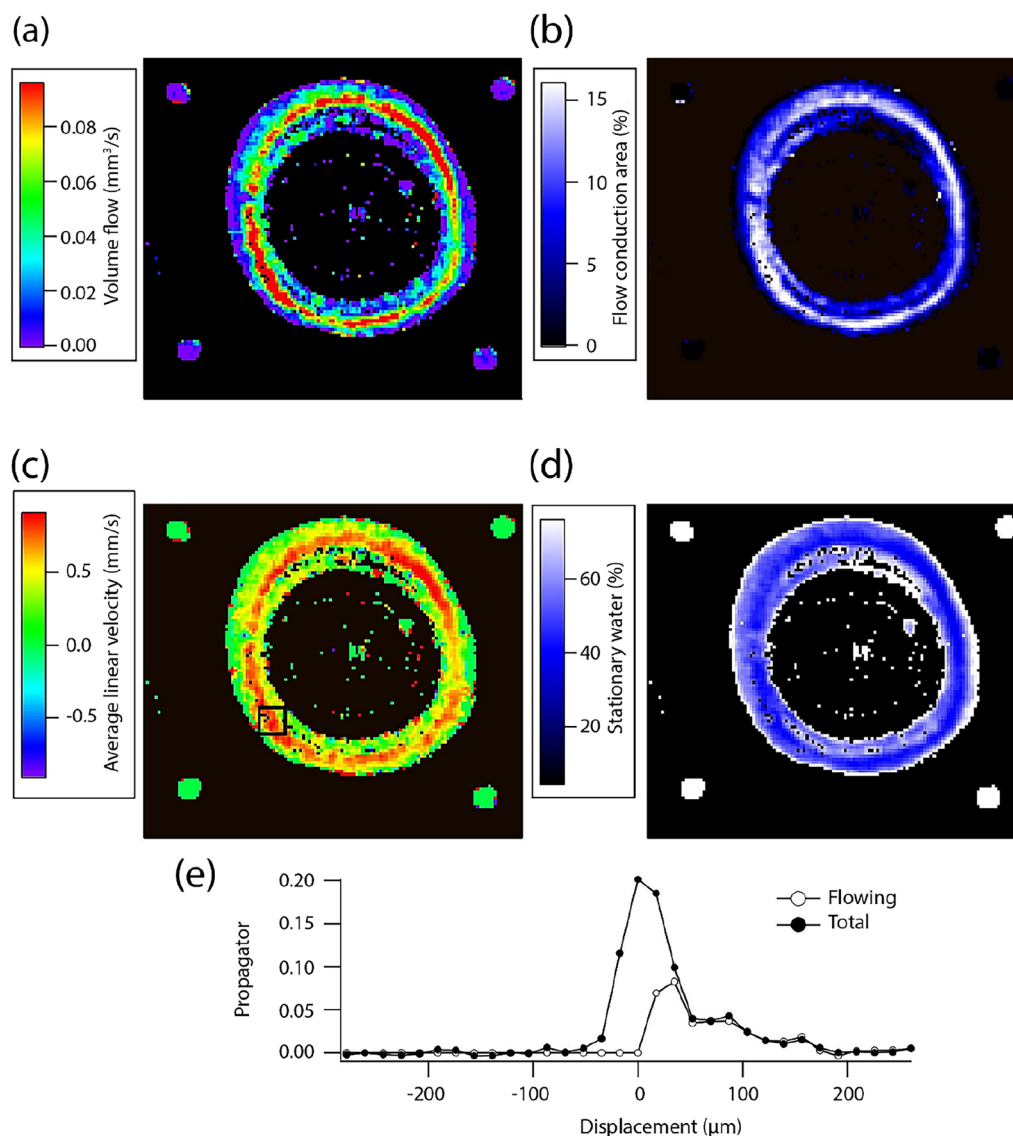


Fig. 3 Flow parameters: volume flow (a), flow conducting area (b), average linear velocity (c), and amount of stationary water (d). The propagator displayed (e) was measured in the pixel represented by a black square in (c). These measurements were acquired with a 0.2 T-MRI on a Zelkova tree in situ (Adapted from [33] with permission from Elsevier)

from 1.6 mm s^{-1} for poplar to 5.10 mm s^{-1} for tomato. They also noticed a variation of the fluxes according to the diurnal cycle, the average speed of the fluxes decreasing at night regardless of the vessel studied. Nagata et al. measured xylem flow in a tree (Zelkova) outside the laboratory [33]. They showed this same day/night cycle in connection with measurements of sap flow carried out elsewhere, and an evolution of these fluxes according to the season, the latter decreasing in autumn and winter due to the loss of leaves. Figure 3 presents an example of how sap flow and its distribution can be measured over an entire plant organ.

Physiological processes

Non-invasive imaging methods permit the study of physiological processes. Root water uptake has been studied by X-ray [41, 42] and neutron tomography [21, 43–45] and also by 2D-light transmission imaging [24, 25]. These methods enable a spatially resolved study of root water uptake. Recently, Bagnall et al. demonstrated with a low-field MRI device that roots can be detected and imaged in natural soils, helping to better understand root morphology, architecture, and development [13, 38]. But, as far as we know, spatially resolved root water uptake has not yet been studied with portable MRI. Nonetheless, diurnal

variations of proton density and relaxation times have been observed in the roots of herbaceous species [46]. Such variations in proton density were also observed in the stems of trees [34, 47]. In the cited studies, MRI parameters, proton density and T_2 , were elevated at the end of the night and decreased during the day. This evolution was consistent with the physiology of the plant which transpired during the day.

Organ growth has also been successfully studied using portable MRI. Windt et al. showed that there was a change in the amount of water in trees at night, with an observation of the growth of the trunk after a few days [47]. At night, the quantity of water in the tree increased, then a portion was used at the beginning of the day, followed by a stabilization in the amount of water present in the trunk. As the days passed, the overall amount of water present in the trunk increased, reflecting growth of the trunk. Similar results were observed in oak with an increase in water uptake at night. A link between the diameter of the stem and the amount of water absorbed has also been established, the latter being greater when the diameter of the stem increases [48]. While these studies were conducted in a climate chamber, Nagata et al. followed the growth of a tree outside the laboratory, in the plant's natural environment [33]. They observed that tree growth was rapid during the spring and summer months via the visualization of growth rings. Growth slowed after the summer months, and stopped completely during the winter months, until the following summer with a slight increase in trunk diameter (Fig. 4).

While physiological processes, such as growth, have been studied with direct measurements (visualization of growth rings or variation of the amount of water), they can also be studied indirectly with the evolution of relaxation times which can be related to the evolution of the structure and/or function of organs. Using a portable device, growth and senescence processes have been studied on leaves using relaxation times. Musse et al. demonstrated that three or four T_2 relaxation times were present depending upon leaf phenology. These relaxation times were attributed to cellular compartments such as the vacuole, the cell wall or even the dry matter. While the shorter relaxation times disappeared with increasing levels of development, the longer relaxation times increased in proportion. This was due to the increase in the size of the vacuole [49]. In senescing leaves, the longest T_2 relaxation time split into two components. This has been attributed to tissue heterogeneity, namely, palisade cells [50, 51]. Using portable devices, relaxation times and other NMR parameters have also been used to study the growth of fruits. Geya et al. showed an increase in the value of relaxation times and ADC in conjunction with increasing fruit weight [52]. Another study followed the maturation of tomatoes and showed that three structures composing the fruit were visible at the beginning of the experiment (pericarp, loculus and placenta), while the pericarp and loculus were no longer distinguishable at the end of the experiment on mature fruit. The level of ripening could also be quantified due to the pericarp/locule ratio which increased with the maturity of the fruit [35].

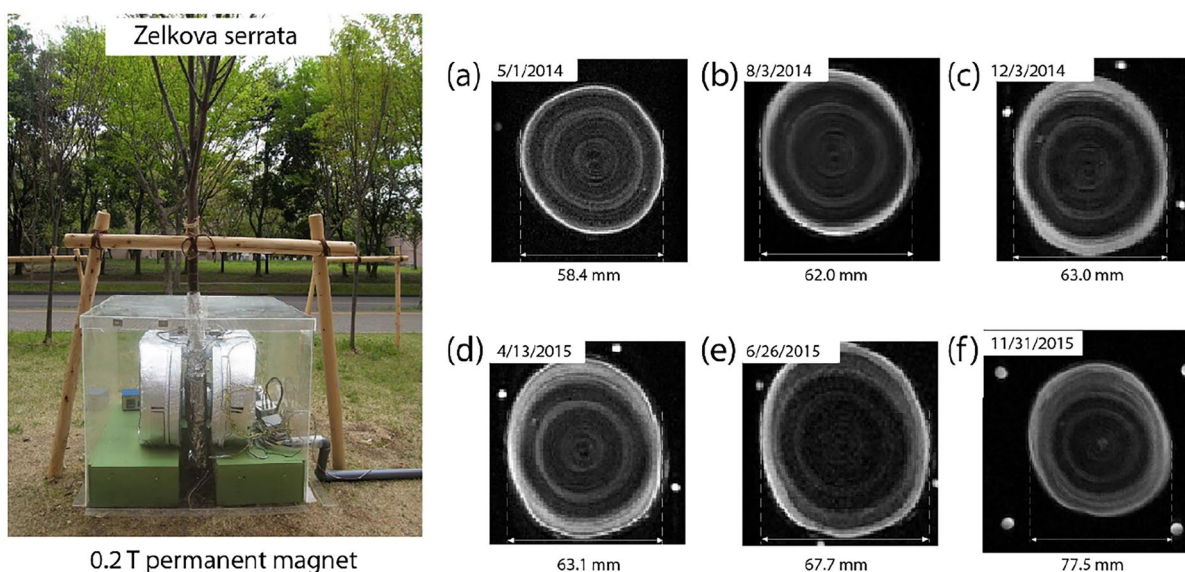


Fig. 4. 0.2 T-MRI positioned outside the laboratory on the stem of *Zelkova serrata*. Images (a–f) shows the growth of the stem, an increase of the stem diameter being observed (Adapted from [33] with permission from Elsevier)

Measuring stress and disease impacts with portable MRI

Portable MRI enables the study of the impact of hydric stress and the monitoring of water dynamics in plants submitted to drought conditions, while overcoming the challenges of alternative methods. Scheenen et al. induced embolism in the stem of a cucumber plant by cooling the roots, and used a potentially portable MRI device to observe the formation and recovery of embolized vessels by taking flow measurements [53]. Using a portable and unilateral device, other authors (Blystone et al., unpublished) were able to differentiate the xylem and phloem tissues of birch tree branches by taking profiles, the signal intensity in function of measurement depth, as seen in Fig. 5A., as well as observe a linear correlation between the water content of the branches and the integral of the profiles as the branches dehydrated. These authors were also able to observe how the

distribution of water in the xylem and phloem zones changed throughout the dehydration process. Besides birch tree branches, similar results were observed in leaves, stems, branches and roots of other herbaceous plants and trees [10, 37, 54–57]. Contrary to hydrated plants, several studies found no observable nycthemeral variations in the NMR signal in the presence of water stress [55–57]. Peuke et al. captured variations in both xylem and phloem fluxes in potted castor bean plants according to anoxic treatments in both roots and shoots, and put in evidence a loss of circadian variation in the xylem flux after anoxia in the root zone. All of these results were obtained based on semi-quantitative data. However, drought impact can be studied with transverse relaxation times. A decrease in mean T_2 has been demonstrated in leaves, branches and roots submitted to water stress [10, 54, 57, 58]. Portable MRI has also been used

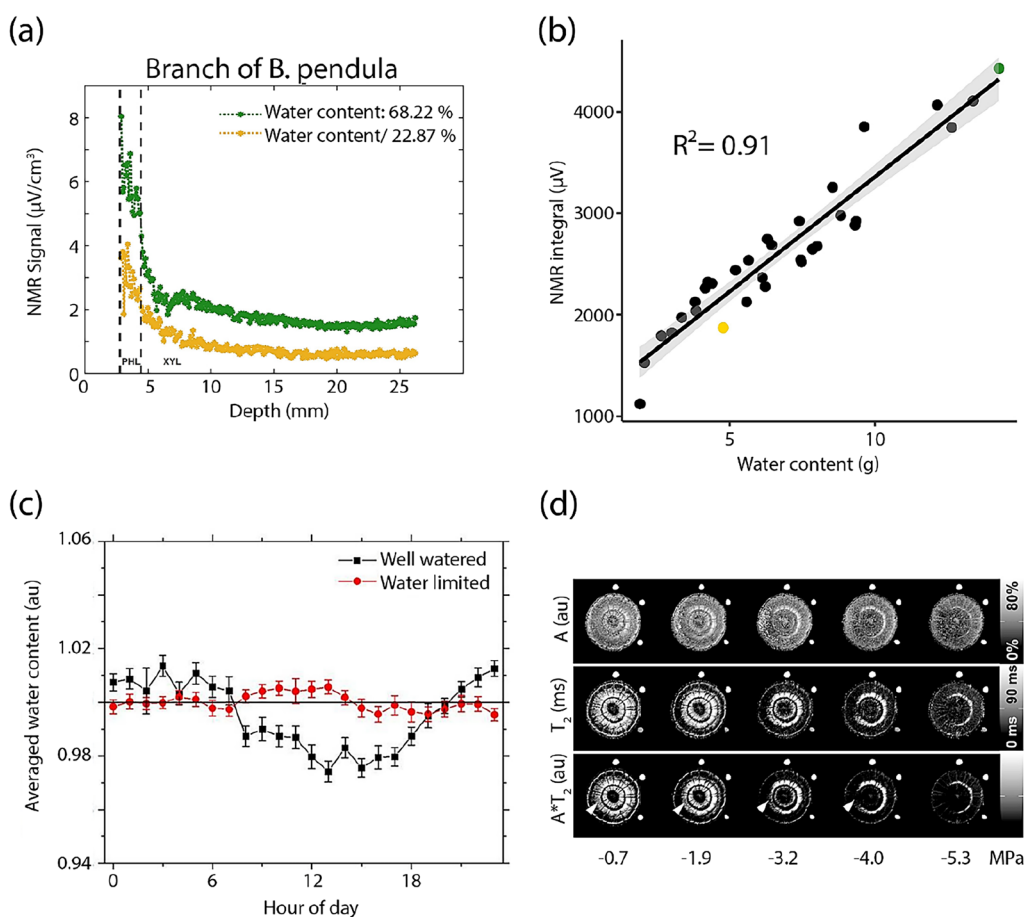


Fig. 5 Profiles acquired on (a) the branch of a birch tree, *B. pendula* (Blystone et al., unpublished). The peak between the dashed lines corresponds to the bark zone, including the phloem tissue (PHL), while the broader peak at greater depths corresponds to xylem tissue (XYL); (b) Linear regression of the integral of the NMR signal as a function of water content, taken through time, on branches of silver birch trees. The green and yellow points correspond to the profiles of subset a. (c) Diurnal evolution of the average water content in an Aspen tree under well-watered (black) and water limited conditions (Adapted from [56] with permission from Frontiers). (d) Quantitative maps of a *Fagus sylvatica* stem according to the water potential (Adapted from [10] with permission from Wiley)

Table 1 A non-exhaustive tour of the literature of portable or potentially portable MRI applied to plants

Organ	Reference	Species	B ₀ (T)	Highlights
Fruit	Baek et al. [35]	<i>Solanum lycopersicum</i> cv. Tiara, Tiara TY, and Unicorn	1	Variation in signal intensity as a function of maturity; Assignment of maturity based on the pericarp/locule signal ratio
	Geya et al. [52]	<i>Pyrus pyrifolia</i>	0.2	Variation in T_2 as a function of fruit growth and changes in tissue structure; Linear relationship between relaxation rates and the inverse of the cube root of pear fruit weight
	Windt and Blümmler [48]	<i>Phaseolus vulgaris</i> L	0.26	Monitoring of fruit water content and fruit growth
Leaves	Capitani et al. [54]	<i>Zea mays</i> ; <i>Phaseolus vulgaris</i> ; <i>Populus nigra</i> ; <i>Cistus incanus</i> ; <i>Quercus ilex</i>	0.4	Relationship between the integral of the NMR signal and leaf water status, and with the rate of transpiration in hydrated leaves; Reduction in NMR signal with leaf dehydration; Different trends between species depending on their water strategies
	Musse et al. [49]	<i>Brassica napus</i> L., genotype Tenor	0.47	Access to cell structure by measuring T_2 through sub-cellular water distribution; Variation in T_2 distribution as a function of leaf developmental stage
	Musse et al. [51]	<i>Brassica napus</i> L., genotype Aviso	0.47	Reflection of the senescence process in the variation of T_2 distribution; Earlier change in T_2 than in chlorophyll and dry matter content
	Sorin et al. [50]	<i>Brassica napus</i> L., genotype Tenor	0.47	Access to cell structure by measuring T_2 through sub-cellular water distribution; Variation in T_2 distribution as a function of leaf developmental stage
	Sorin et al. [58]	<i>Nicotiana tabacum</i> cv. Xanthi	0.47	The stage of leaf development mainly affects the longest T_2 ; The impact of water stress depends on the plant's stage of development and the intensity of the stress
	Windt et al. [37]	<i>Oryza sativa</i> cv. Nuovo Maratelli	0.242	Diurnal variation in leaf water content; Weaker tendency in case of osmotic stress
	Stem	Fukuda et al. [59]	<i>Cercidiphyllum japonicum</i> ; <i>Betula platyphylla</i> var. japonica	1
Homan et al. [39]		<i>Prunus</i>	0.7	Similar flow measurements at high and low magnetic fields
Jones et al. [36]		<i>Prunus padus</i>	0.025	Imaging water distribution; Correlation between signal intensity and meteorological conditions; Diurnal and seasonal variation in water status
Kimura et al. [11]		<i>Pyrus pyrifolia</i>	0.3	Clear difference between the ADC map of the branch affected by dwarf disease and the ADC map of the normal branch; Variation in microscopic water flow in the branch as a function of solar radiation
Malone et al. [56]		<i>Populus tremuloides</i> ; <i>Juniperus monosperma</i> ; <i>Pinus edulis</i>	9E-04	Diurnal variation of the NMR signal in a well-watered plant; No clear diurnal variation of the NMR signal in a water-limited plant
Meixner et al. [10]		<i>Fagus sylvatica</i>	0.25	Measurement of water content; Visualization of emboli propagation;
Meixner et al. [34]		<i>Malus domestica</i> cv. Captan; <i>Fagus sylvatica</i>	0.25	Imaging water distribution; Diurnal variation in water content and T_2
Nagata et al. [33]		<i>Zelkova serrata</i>	0.2	Monitoring tree growth; Diurnal and seasonal variation in xylem flow

Table 1 (continued)

Organ	Reference	Species	B ₀ (T)	Highlights
	Peuke et al. [62]	<i>Ricinus communis</i> L	0.72	Reduction in phloem and xylem flows during root anoxia treatment; No diurnal variation in xylem sap flow after anoxia treatment; Reduction then recovery of phloem sap flow during shoot anoxia treatment
	Scheenen et al. [53]	<i>Cucumis sativus</i> cv. Hurona	0.7	Reduction in root water uptake and xylem hydraulic conductance due to emboli formation after cold stress; Refilling monitoring
	Umebayashi et al. [60]	<i>Pinus thunbergii</i>	0.3	Imaging the spread of embolism in pine wilted disease caused by nematodes; Characterization of two types of embolism, one of which spread in all directions and was caused by the nematode population staying around the inoculation site
	Utsuzawa et al. [61]	<i>Pinus thunbergii</i>	1	Visualisation of xylem cavitation and the spread of embolism caused by nematodes; Area and speed of cavitation spreading in two stages: a first one with gradual and confined propagation, and second, rapid propagation progressing until it occupied most of the xylem
	Van As et al. [40]	<i>Cucumis sativus</i> L	0.235	Variation in flux and T ₂ with light intensity
	Windt et al. [12]	<i>Populus tremula</i> × <i>Populus alba</i> , INRA clone 717 1B4; <i>Ricinus communis</i> ; <i>Lycopersicon esculentum</i> cv. Counter; <i>Nicotiana tabacum</i> cv. Petit Havana SR1	0.72	Measurement of phloem and xylem flow; Diurnal variation in xylem flow
	Windt et al. [47]	<i>Ricinus communis</i> ; <i>Populus nigra</i>	0.57	Non spatially resolved xylem flow measurement; Diurnal variation in water status; Monitoring the growth of a tree trunk
	Windt and Blümler [48]	<i>Populus nigra</i> L.; <i>Quercus robur</i> L	0.57 0.26	Measurement of xylem flow; Monitoring water content, stem diameter growth and shrinkage
	Yoder et al. [55]	<i>Populus tremuloides</i> ; <i>Pinus edulis</i> ; <i>Juniperus monosperma</i> ; <i>Pinus ponderosa</i>	9E-04	Decrease in signal amplitude as the tree dries out
Roots	Bagnall et al. [38]	<i>Sorghum bicolor</i> (L. Moench)	0.047	Measuring soil and root T ₂ ; Soil T ₂ variation as a function of soil type; Imaging roots in the soil
	Bagnall et al. [13]	<i>Sorghum bicolor</i> (L. Moench)	0.047	2D and 3D imaging of root architecture in soils; Root segmentation
	Nuixé et al. [46]	<i>Dactylis glomerata</i> ; <i>Plantago lanceolata</i> ; <i>Medicago sativa</i>	0.3	Diurnal variation in water content and in T ₂

to study embolism formation and spreading. It has been shown in studies on tree organs that embolism begins in the oldest xylem vessels before spreading to the youngest [10, 59]. A good correlation has been observed between the areas of xylem filled with water and the areas with the highest signal on the MRI, and between the curves of vulnerability and the embolized area, giving the possibility of estimating the areas of xylem impelling water movement [59].

Besides studying drought impact, portable MRI has also been used to study the influence of diseases on

anatomy and water dynamics. In 2011, Japanese researchers developed a portable MRI device to characterize the physiological differences between the branch of a healthy pear tree and the branch of a pear tree affected by dwarfism [11]. These authors observed a difference in relaxation times, ADC values, and their distributions, between the diseased and healthy branches, which translated to the visualization of the yearly rings in healthy trees, and the absence in diseased ones. Using a portable device, Umebayashi et al. followed the progression of pine wilt disease and its impact upon xylem embolism by imaging

water distribution over time [60]. These authors used T_1 weighted conditions to show that embolism spread in two different ways, both in a growing number of small patches and the spreading of a larger patch at the site of nematode inoculation. Utsuzawa et al. also followed the progression of pine wilt disease using a potentially portable MRI device and T_1 -weighted conditions [61]. They were able to show that the area and speed of cavitation spread in two stages: a first stage characterized by gradual and confined propagation, and a second stage characterized by rapid propagation until it occupied most of the xylem tissue.

Table 1 summarizes all the references mentioned in this review concerning the use of portable or potentially portable MRI to measure plant structure or physiology.

Comparison of portable MRI and alternative methods

Portable MRI is capable of measuring water content directly, non-destructively, quantitatively, and in the field. Alternative methods to measure water content, such as taking fresh and dry weights or using NIRS, come with certain disadvantages. Taking fresh and dry weights has the advantage of being direct and quantitative, but it is forcibly destructive. NIRS enables water content measurements non-destructively and in situ, but it is indirect as the method relies upon calibration models which need validation for each species tested in order to interpret spectra. The interpretation of spectra can be difficult due to the fact that a variety of spectral information on pigment uptake, diffusion and leaf structure can obscure water information [63]. Analysis with NIRS is also limited to the outermost layers of a sample. THz spectroscopy, while relatively inexpensive and a non-ionizing alternative to X-ray-based imaging, has the disadvantage of being indirect, as models must be used to link data to plant water content. Modeling becomes further complicated in the context of in situ measurements, and a large number of plants would have to be measured in order to render useful models. Relying upon models presents a challenge with regard to the universal application of a method, as models are often specific to a certain plant species, or even to specific experimental conditions. Like NIRS, the THz method is also limited to the superficial layers of the sample.

Regarding methods to study plant structure, microscopy techniques, 2D-light transmission imaging, X-ray and neutron radiography/tomography are all limited to laboratory use. Portable MRI is able to transcend the challenge of taking structural measurements in the field. In addition, microscopy techniques are destructive [64], as are dye tracing techniques. Due to ionizing radiation, X-ray radio/tomography can also impact

natural processes within the plant [65]. 2D-light transmission imaging is especially limited as it cannot be used with an opaque medium [66] such as the soil found in a plant's natural environment. It also requires the use of a very thin rhizotron which limits the plant species that can be studied. Portable MRI techniques are capable of overcoming these challenges. Air-coupled ultrasound is non-invasive, non-destructive, and has a high temporal resolution. However, this technique is indirect and relies upon the interpretation of ultrasonic parameters, which can be impacted by multiple variables inherent to the sample, creating results with large variation [22]. The use of laser-based guided waves equally yields results with variation as the spectral response is impacted by biological processes that vary spatially and temporally. Both air-coupled ultrasound and guided wave techniques are indirect as information about plant water status is extrapolated from mechanical information yielded by the measurements. Moreover, the laser beam used for guided waves techniques can also cause tissue damage [23].

MRI techniques permit the imaging of cavitation and following the dehydration process of a plant by directly imaging water content locally. Alternative methods to measure cavitation, such as the XY'LEM system and methods based on acoustic emissions, are limited in scope and application. The XY'LEM system is forcibly destructive, it must be carried out in the laboratory, and it only gives information on one branch. Moreover, the system links the conductivity over the entire branch with cavitation percentages, giving no indication of local dehydration. Methods based on acoustic emissions are limited in that they are more qualitative than quantitative. Moreover, linking acoustic emissions to the amount of cavitation in a sample relies upon the assumption that the plant vulnerability curve has a perfect sigmoid shape, and also that the end point, where there is 100% cavitation, is known [32], providing results with a large margin of error.

One of the major advantages of MRI techniques is that they provide a multitude of information; one can measure the water content and the flow of water with the same device. Alternative methods to measure sap flow give information only on flow, as well as presenting other disadvantages. While dye tracing is inexpensive and easy to implement, it is destructive as plant organs must be sampled to measure dye accumulation. Using deuterium to measure flow can be done in situ, but the method is invasive and relies upon models to interpret the results, and relying upon models leads to limitations previously evoked [67]. Sap flow meters can also be used in situ, however, they are equally invasive [68]. Gravimetric methods require the plant to be in a container that can be placed on a scale, eliminating the possibility

Table 2 Advantages and inconveniences of methods, alternative to portable MRI, used to measure water content, plant structure, xylem and phloem fluxes, and cavitation

Parameter measured	Method	Advantages	Disadvantages
Anatomy	Microscopy	Affordable; easy to perform; high spatial resolution (from a few hundredths of a nanometer for electronic to a couple of tenths of a micrometer for optic)	Destructive; Limited to laboratory; only a small portion of sample can be observed at once
	X-ray (μ)radiography	High spatial ($\sim 50\text{--}100\ \mu\text{m}$) and temporal (\sim tens of seconds per scan) resolution; non-invasive	Limited to laboratory; possible impact of ionizing radiation; expensive; not easily accessible
	Neutron radiography	High spatial ($\sim 100\ \mu\text{m}$) and temporal (\sim tens of seconds per scan) resolution; non-invasive; adapted to dense materials	Limited to laboratory; expensive; not easily accessible; possible impact of neutron radiation on plant tissue; limited to plants that fit in a thin container
	Dye tracing	Affordable; easy to perform; portable	Destructive
	Air-coupled ultrasound	Non-invasive; high temporal resolution (a few seconds per scan); easy to perform; affordable; portable	Indirect; large variation in results
	Laser-based guided waves	High temporal resolution (\sim a few seconds per scan); easy to perform; portable	Indirect; large variation in results; laser beam can cause tissue damage
Water content	High-field MRI	Non-invasive; high spatial ($\sim 100\ \mu\text{m}$) and temporal (from a few minutes to a few hours depending upon the experiment) resolution	Limited to laboratory; expensive equipment and maintenance; not easily accessible; mainly horizontal orientation; limited plant size and shape
	Fresh weight/Dry weight	Affordable; Easy to perform	Limited to laboratory; Destructive; time consuming (overnight drying required)
	NIRS	Non-invasive; portable; affordable; easy to perform	Indirect; results must be interpreted through models (problem of genericity); calibration particularities for a given species and/or context; limited to outermost layers of sample
	THz spectroscopy	Non-invasive; easy to perform; affordable; portable	Indirect; results must be interpreted through models; limited to outermost layers of sample
Xylem flux	High-field MRI	Non-invasive; high spatial ($\sim 100\ \mu\text{m}$) and temporal (from a few minutes to a few hours depending upon the experiment) resolution	Limited to laboratory; expensive equipment and maintenance; not easily accessible; mainly horizontal orientation; limited plant size and shape
	Sap flow meters	Portable; affordable; easy to perform	Invasive; limited to organs with sufficient diameter
	Porometers	Portable; affordable; easy to perform	Indirect; large margin of error in estimating sap flow due to variation between leaves
	2D light transmission	Non-invasive; affordable; spatial resolution ($\sim 200\text{--}500\ \mu\text{m}$), offers real-time data on water uptake by roots	Indirect; limited to laboratory; limited to certain plants that fit in a thin container and sandy soil; no other light sources than the instrument during measurement
	Gravimetric	Affordable; portable; easy to perform; non-invasive	Indirect
	Isotopic tracing	Portable	Destructive; results must be interpreted through models; can be expensive (cost of radiotracers and mass spectroscopy analyses)
	Dye tracing	Affordable; easy to perform; portable	Destructive
	High-field MRI	Non-invasive; high spatial ($\sim 100\ \mu\text{m}$) and temporal (from a few minutes to a few hours depending upon the experiment) resolution	Limited to laboratory; expensive equipment and maintenance; not easily accessible; mainly horizontal orientation; limited plant size and shape

Table 2 (continued)

Parameter measured	Method	Advantages	Disadvantages
Phloem flux	Aphids	Affordable	Limited to laboratory; Indirect, limited to certain plant species; approximate with large margin of error; can be complicated to execute
	¹¹ C PET imaging	Non-invasive; sufficient spatial resolution to capture water dynamics (a couple of millimeters) and high temporal (a few minutes) resolution	Limited to laboratory; expensive and cumbersome equipment; possible impact of ionizing radiation
Cavitation	High-field MRI	Non-invasive, high spatial (~ 100 μm) and temporal (from a few minutes to a few hours depending upon the experiment) resolution	Limited to laboratory; expensive equipment and maintenance; not easily accessible; mainly horizontal orientation; limited plant size and shape
	Acoustic emissions	Portable; easy to perform; affordable	Indirect, more qualitative than quantitative, can be destructive
	Dye tracing	Affordable; easy to perform; portable	Destructive
	Xylem Embolism Meter	Affordable; easy to perform	Indirect, Destructive; limited to laboratory; not suitable for very small (fine roots) or large samples (> 10 cm diameter)
	Microscopy	Affordable; easy to perform; high spatial resolution (from a few hundredths of a nanometer for electronic to a couple of tenths of a micrometer for optic)	Destructive; Limited to laboratory; only a small portion of sample can be observed at once
	X-ray (μ)radiography	High spatial (~ 50–100 μm) and temporal (~ tens of seconds per scan) resolution; non-invasive	Limited to laboratory; possible impact of ionizing radiation; expensive; not easily accessible
	Neutron radiography	High spatial (~ 100 μm) and temporal (~ tens of seconds per scan) resolution; non-invasive; adapted to dense materials	Limited to laboratory; expensive; not easily accessible; possible impact of neutron radiation on plant tissue; limited to plants that fit in a thin container
	High-field MRI	Non-invasive; high spatial (~ 100 μm) and temporal (from a few minutes to a few hours depending upon the experiment) resolution	Limited to laboratory; expensive equipment and maintenance; not easily accessible; mainly horizontal orientation; limited plant size and shape

of monitoring a plant in its natural environment. While porometers can be used outdoors in a plant's natural environment, the estimation of plant transpiration comes with a large margin of error due to variation between leaves and location within the canopy. Beyond MRI, methods to measure phloem flow are even more limited. PET imaging is non-invasive and direct, but its use is limited due to the necessity of expensive and cumbersome laboratory equipment which is needed to generate radiotracers [28, 29]. While using aphids to measure phloem flow does not require expensive equipment, the technique is limited to plant species with a corresponding insect host, and to tissues in which the aphid can penetrate. It is also difficult to accurately measure the rate of phloem transport because the phloem quantities are in the nanoliter range and evaporation has a significant impact on the measurements [30].

Portable MRI, however, does present its own unique challenges. In comparison to most of the alternative methods mentioned, portable MRI devices are often made in-house. This means that there are very few commercialized devices available with standard protocols, and this limits the widespread use of the method. Moreover, the smaller magnet size of portable devices leads to a loss of resolution which can limit the use of portable MRI with regard to imaging certain microstructures, such as the cambium cell layer in trees. Magnets are also sensitive to temperature, which can create complications with an apparatus that is used outdoors in highly variable conditions. The shape and orientation of devices can also limit their application to plants. Devices with enclosed magnetic fields can limit the size and shape of organs that can be measured, and horizontally oriented devices are limited in the field where organs, such as stems, have vertical orientations. Finally, the manipulation of experimental MRI parameters and the interpretation of results often demands specialized knowledge in the field of MRI, making magnetic resonance techniques difficult to apply for the non-expert user. Nonetheless, these drawbacks are compensated by the ability of portable MRI to non-invasively study plant structure, physiology, and plant water dynamics outside of the laboratory, and using only one tool.

The advantages and disadvantages of each method discussed in this review, alternative to portable MRI, are summarized in Table 2. We defined a method as not easily accessible when it requires constraining laboratory equipment, such as specific lead shields, as is the case with the use of X-ray imagers, or when the access for plant work is difficult (geometry and orientation of the device). We considered a method as easy to perform when the execution of the experiment requires few steps.

We consider a method to be affordable if it is significantly cheaper than the majority of portable MRI devices.

Conclusion

Portable MRI is an extremely useful tool in the plant sciences and presents a multitude of advantages over alternative methods. It has mainly been used on trees, but applications can be found on other types of plants, such as herbaceous or crop species. By studying water in a plant, portable MRI is capable of measuring plant structure, physiology, stress response, disease, water content, and flow, all non-invasively, directly, and in the field. Thus, portable MRI can extract a multitude of information using one method, whereas multiple alternative laboratory methods would otherwise have to be used in combination. While there is still work to be done to increase its accessibility to plant biologists, portable MRI stands as a promising method to study plant structure and functioning.

Abbreviations

ADC	Apparent diffusion coefficient
B_0	Principal magnetic field
CO_2	Carbon dioxide
MRI	Magnetic resonance imaging
NIRS	Near infrared spectroscopy
NMR	Nuclear magnetic resonance
RWC	Relative water content
SNR	Signal-to-noise ratio
T_1	Longitudinal relaxation time
T_2	Transverse relaxation time

Acknowledgements

We would like to thank Dr. Carel Windt for his contributions to this work, from its conception to its realization. His knowledge in the field of MRI applied to plants was invaluable to this project.

Author contributions

SB and MN drafted the first version of the manuscript. SB, MN, AT, HC, CP-C and GP reviewed and updated the manuscript. All authors read and approved the final manuscript.

Funding

The research leading to these results received funding from the ANR project OutLabMRI (ANR-19-CE04-0006) and from the French government IDEX-ISITE initiative 16-IDEX-0001 (CAP 20–25) through M.N.'s PhD grant.

Availability of data and materials

Data sharing is not applicable to this article as no datasets were generated or analyzed during the current study.

Declarations

Ethics approval and consent to participate

Not applicable.

Consent for publication

Not applicable.

Competing interests

The authors declare that they have no competing interests.

Received: 10 October 2023 Accepted: 5 February 2024
Published online: 18 February 2024

References

- Schulze ED, Beck E, Buchmann N, Clemens S, Müller-Hohenstein K, Scherer-Lorenzen M. Water deficiency (Drought). In: Schulze ED, Beck E, Buchmann N, Clemens S, Müller-Hohenstein K, Scherer-Lorenzen M, editors. *Plant ecology*. Berlin: Springer, Berlin Heidelberg; 2019. p. 165–202. https://doi.org/10.1007/978-3-662-56233-8_6
- Kamal T, Cheng S, Khan IA, Nawab K, Zhang T, Song Y, et al. Potential uses of LF-NMR and MRI in the study of water dynamics and quality measurement of fruits and vegetables. *J Food Process Preserv*. 2019;43(11):e14202. <https://doi.org/10.1111/jfpp.14202>
- Colnago LA, Wiesman Z, Pages G, Musse M, Monaretto T, Windt CW, et al. Low field, time domain NMR in the agriculture and agrifood sectors: an overview of applications in plants, foods and biofuels. *J Magn Reson*. 2021;323:106899. <https://doi.org/10.1016/j.jmr.2020.106899>
- Hills BP, Duce SL. The influence of chemical and diffusive exchange on water proton transverse relaxation in plant tissues. *Magn Reson Imaging*. 1990;8(3):321–31. [https://doi.org/10.1016/0730-725X\(90\)90106-C](https://doi.org/10.1016/0730-725X(90)90106-C)
- Van As H. Intact plant MRI for the study of cell water relations, membrane permeability, cell-to-cell and long distance water transport. *J Exp Bot*. 2007;58(4):743–56. <https://doi.org/10.1093/jxb/erl157>
- Köckenberger W, Pope JM, Xia Y, Jeffrey KR, Komor E, Callaghan PT. A non-invasive measurement of phloem and xylem water flow in castor bean seedlings by nuclear magnetic resonance microimaging. *Planta*. 1997;201(1):53–63. <https://doi.org/10.1007/BF01258680>
- Pohlmeier A, Oros-Peusquens A, Javaux M, Menzel MI, Vanderborcht J, Kaffanke J, et al. Changes in soil water content resulting from *Ricinus* root uptake monitored by magnetic resonance imaging. *Vadose Zone J*. 2008;7(3):1010–7. <https://doi.org/10.2136/vzj2007.0110>
- Van As H, Scheenen T, Vergeldt FJ. MRI of intact plants. *Photosynth Res*. 2009;102(2–3):213–22. <https://doi.org/10.1007/s11120-009-9486-3>
- Gruwel MLH. In situ magnetic resonance imaging of plant roots. *Vadose Zone J*. 2014;13(3):1–8. <https://doi.org/10.2136/vzj2013.08.0158>
- Meixner M, Tomasella M, Foerst P, Windt CW. A small-scale MRI scanner and complementary imaging method to visualize and quantify xylem embolism formation. *New Phytol*. 2020;226(5):1517–29. <https://doi.org/10.1111/nph.16442>
- Kimura T, Geya Y, Terada Y, Kose K, Haishi T, Gemma H, et al. Development of a mobile magnetic resonance imaging system for outdoor tree measurements. *Rev Sci Instrum*. 2011;82(5):053704. <https://doi.org/10.1063/1.3589854>
- Windt CW, Vergeldt FJ, De Jager PA, Van As H. MRI of long-distance water transport: a comparison of the phloem and xylem flow characteristics and dynamics in poplar, castor bean, tomato and tobacco. *Plant Cell Environ*. 2006;29(9):1715–29. <https://doi.org/10.1111/j.1365-3040.2006.01544.x>
- Bagnall GC, Altobelli SA, Conradi MS, Fabich HT, Fukushima E, Koonjoo N, et al. Design and demonstration of a low-field magnetic resonance imaging rhizotron for in-field imaging of energy sorghum roots. *Plant Phenome J*. 2022;5(1):e20038. <https://doi.org/10.1002/ppj2.20038>
- Jones HG. Monitoring plant and soil water status: established and novel methods revisited and their relevance to studies of drought tolerance. *J Exp Bot*. 2006;58(2):119–30. <https://doi.org/10.1093/jxb/erl118>
- Ozaki Y, Huck C, Tsuchikawa S, Engelsens SB, editors. *Near-infrared spectroscopy: Theory, spectral analysis, instrumentation, and applications*. Singapore: Springer Singapore; 2021. <https://doi.org/10.1007/978-981-15-8648-4>
- Afsah-Hejri L, Akbari E, Toudeshki A, Homayouni T, Alizadeh A, Ehsani R. Terahertz spectroscopy and imaging: a review on agricultural applications. *Comput Electron Agric*. 2020;177:105628. <https://doi.org/10.1016/j.compag.2020.105628>
- Mooney SJ, Pridmore TP, Helliwell J, Bennett MJ. Developing X-ray computed tomography to non-invasively image 3-D root systems architecture in soil. *Plant Soil*. 2012;352(1–2):1–22. <https://doi.org/10.1007/s11104-011-1039-9>
- Cochard H, Delzon S, Badel E. X-ray microtomography (micro-CT): a reference technology for high-resolution quantification of xylem embolism in trees. *Plant, Cell Environ*. 2015;38(1):201–6. <https://doi.org/10.1111/pce.12391>
- Esser HG, Carminati A, Vontobel P, Lehmann EH, Oswald SE. Neutron radiography and tomography of water distribution in the root zone. *Z Pflanzenernähr Bodenkd*. 2010;173(5):757–64. <https://doi.org/10.1002/jpln.200900188>
- Tötzke C, Miranda T, Konrad W, Gout J, Kardjilov N, Dawson M, et al. Visualization of embolism formation in the xylem of liana stems using neutron radiography. *Ann Bot*. 2013;111(4):723–30. <https://doi.org/10.1093/aob/mct014>
- Cai G, Tötze C, Kaestner A, Ahmed MA. Quantification of root water uptake and redistribution using neutron imaging: a review and future directions. *Plant J*. 2022;111(2):348–59. <https://doi.org/10.1111/tbj.15839>
- Fariñas MD, Martínez-Gimeno MA, Badal E, Tasa M, Bonet L, Manzano-Juárez J, et al. Evaluation of ultrasonic parameters as a non-invasive, rapid and in-field indicator of water stress in Citrus plants. *Agric Meteorol*. 2021;15(310):108651. <https://doi.org/10.1016/j.agrformet.2021.108651>
- Collazos-Burbano DA, Ealo Cuello JL, Villagrán-Muniz M. Propagation of ultrasonic guided waves in plant leaves. *J Phys D: Appl Phys*. 2021;54(9):095401. <https://doi.org/10.1088/1361-6463/abc991>
- Doussan C, Pierret A, Garrigues E. Water uptake by plant roots: II—modelling of water transfer in the soil root-system with explicit account of flow within the root system—comparison with experiments. *Plant Soil*. 2006;283:99–117. <https://doi.org/10.1007/s11104-004-7904-z>
- Garrigues E, Doussan C, Pierret A. Water uptake by plant roots: I—formation and propagation of a water extraction front in mature root systems as evidenced by 2D light transmission imaging. *Plant Soil*. 2006;283(1–2):83–98. <https://doi.org/10.1007/s11104-004-7903-0>
- Camp WH, Liming FG. The use of basic fuchsin in plant anatomy. *Stain Technol*. 1932;7(3):91–3. <https://doi.org/10.3109/10520293209116080>
- Varney GT, Canny MJ. Rates of water uptake into the mature root system of maize plants. *New Phytol*. 1993;123(4):775–86. <https://doi.org/10.1111/j.1469-8137.1993.tb03789.x>
- De Schepper V, Bühler J, Thorpe M, Roeb G, Huber G, van Dusschoten D, et al. 11C-PET imaging reveals transport dynamics and sectorial plasticity of oak phloem after girdling. *Front Plant Sci*. 2013;4. <https://doi.org/10.3389/fpls.2013.00200>
- Hubeau M, Steppe K. Plant-PET scans: in vivo mapping of xylem and phloem functioning. *Trends Plant Sci*. 2015;20(10):676–85. <https://doi.org/10.1016/j.tplants.2015.07.008>
- Palmer LJ, Palmer LT, Pritchard J, Graham RD, Stangoulis JC. Improved techniques for measurement of nanolitre volumes of phloem exudate from aphid stylectomy. *Plant Methods*. 2013;9(1):18. <https://doi.org/10.1186/1746-4811-9-18>
- Cochard H, Badel E, Herbette S, Delzon S, Choat B, Jansen S. Methods for measuring plant vulnerability to cavitation: a critical review. *J Exp Bot*. 2013;64(15):4779–91. <https://doi.org/10.1093/jxb/ert193>
- De Roo L, Vergeynst L, De Baerdemaeker N, Steppe K. Acoustic emissions to measure drought-induced cavitation in plants. *Appl Sci*. 2016;6(3):71. <https://doi.org/10.3390/app6030071>
- Nagata A, Kose K, Terada Y. Development of an outdoor MRI system for measuring flow in a living tree. *J Magn Reson*. 2016;265:129–38. <https://doi.org/10.1016/j.jmr.2016.02.004>
- Meixner M, Kochs J, Foerst P, Windt CW. An integrated magnetic resonance plant imager for mobile use in greenhouse and field. *J Magn Reson*. 2021;323:106879. <https://doi.org/10.1016/j.jmr.2020.106879>
- Baek S, Lim J, Lee JG, McCarthy MJ, Kim SM. Investigation of the maturity changes of cherry tomato using magnetic resonance imaging. *Appl Sci*. 2020;10(15):5188. <https://doi.org/10.3390/app10155188>
- Jones M, Aptaker PS, Cox J, Gardiner BA, McDonald PJ. A transportable magnetic resonance imaging system for in situ measurements of living trees: the tree hugger. *J Magn Reson*. 2012;218:133–40. <https://doi.org/10.1016/j.jmr.2012.02.019>
- Windt CW, Nabel M, Kochs J, Jahnke S, Schurr U. A mobile NMR sensor and relaxometric method to non-destructively monitor water and dry matter content in plants. *Front Plant Sci*. 2021;5(12):617768. <https://doi.org/10.3389/fpls.2021.617768>

38. Bagnall GC, Koonjoo N, Altobelli SA, Conradi MS, Fukushima E, Kuethe DO, et al. Low-field magnetic resonance imaging of roots in intact clayey and silty soils. *Geoderma*. 2020;370:114356. <https://doi.org/10.1016/j.geoderma.2020.114356>
39. Homan NM, Windt CW, Vergeldt FJ, Gerkema E, Van As H. 0.7 and 3 T MRI and sap flow in intact trees: xylem and phloem in action. *Appl Magn Reson*. 2007;32(1–2):157–70. <https://doi.org/10.1007/s00723-007-0014-3>
40. Van As H, Reinders JEA, De Jager PA, Van De Sanden PACM, Schaafsma TJ. *In situ* plant water balance studies using a portable NMR spectrometer. *J Exp Bot*. 1994;45(1):61–7. <https://doi.org/10.1093/jxb/45.1.61>
41. Daly KR, Tracy SR, Crout NMJ, Mairhofer S, Pridmore TP, Mooney SJ, et al. Quantification of root water uptake in soil using X-ray computed tomography and image-based modelling. *Plant, Cell Environ*. 2018;41(11):121–33. <https://doi.org/10.1111/pce.12983>
42. Jung SY, Lee SJ, Park H. Investigation of water transport around the root for a plant using X-ray imaging technique. *Measurement*. 2020;151:107159. <https://doi.org/10.1016/j.measurement.2019.107159>
43. Zarebanadkouki M, Kim YX, Carminati A. Where do roots take up water? Neutron radiography of water flow into the roots of transpiring plants growing in soil. *New Phytol*. 2013;199(4):1034–44. <https://doi.org/10.1111/nph.12330>
44. Ahmed MA, Zarebanadkouki M, Meunier F, Javaux M, Kaestner A, Carminati A. Root type matters: measurement of water uptake by seminal, crown, and lateral roots in maize. *J Exp Bot*. 2018;69(5):1199–206. <https://doi.org/10.1093/jxb/erx439>
45. Zarebanadkouki M, Trtik P, Hayat F, Carminati A, Kaestner A. Root water uptake and its pathways across the root: quantification at the cellular scale. *Sci Rep*. 2019;9(1):12979. <https://doi.org/10.1038/s41598-019-49528-9>
46. Nuix M, Traoré AS, Blystone S, Bonny JM, Falcimagne R, Pagès G, et al. Circadian variation of root water status in three herbaceous species assessed by portable NMR. *Plants*. 2021;10(4):782. <https://doi.org/10.3390/plants10040782>
47. Windt CW, Soltner H, van Dusschoten D, Blümler P. A portable Halbach magnet that can be opened and closed without force: the NMR-CUFF. *J Magn Reson*. 2011;208(1):27–33. <https://doi.org/10.1016/j.jmr.2010.09.020>
48. Windt CW, Blümler P. A portable NMR sensor to measure dynamic changes in the amount of water in living stems or fruit and its potential to measure sap flow. *Tree Physiol*. 2015;35(4):366–75. <https://doi.org/10.1093/treephys/tpu105>
49. Musse M, De Franceschi L, Cambert M, Sorin C, Le Caherec F, Burel A, et al. Structural changes in senescing oilseed rape leaves at tissue and subcellular levels monitored by nuclear magnetic resonance relaxometry through water status. *Plant Physiol*. 2013;163(1):392–406. <https://doi.org/10.1104/pp.113.223123>
50. Sorin C, Musse M, Mariette F, Bouchereau A, Leport L. Assessment of nutrient remobilization through structural changes of palisade and spongy parenchyma in oilseed rape leaves during senescence. *Planta*. 2015;241(2):333–46. <https://doi.org/10.1007/s00425-014-2182-3>
51. Musse M, Leport L, Cambert M, Debrandt W, Sorin C, Bouchereau A, et al. A mobile NMR lab for leaf phenotyping in the field. *Plant Methods*. 2017;13(1):53. <https://doi.org/10.1186/s13007-017-0203-5>
52. Geya Y, Kimura T, Fujisaki H, Terada Y, Kose K, Haishi T, et al. Longitudinal NMR parameter measurements of Japanese pear fruit during the growing process using a mobile magnetic resonance imaging system. *J Magn Reson*. 2013;226:45–51. <https://doi.org/10.1016/j.jmr.2012.10.012>
53. Scheenen TWJ, Vergeldt FJ, Heemskerck AM, Van As H. Intact plant magnetic resonance imaging to study dynamics in long-distance sap flow and flow-conducting surface area. *Plant Physiol*. 2007;144(2):1157–65. <https://doi.org/10.1104/pp.106.089250>
54. Capitani D, Brilli F, Mannina L, Proietti N, Loreto F. *In situ* investigation of leaf water status by portable unilateral nuclear magnetic resonance. *Plant Physiol*. 2009;149(4):1638–47. <https://doi.org/10.1104/pp.108.128884>
55. Yoder J, Malone MW, Espy MA, Sevanto S. Low-field nuclear magnetic resonance for the *in vivo* study of water content in trees. *Rev Sci Instrum*. 2014;85(9):095110. <https://doi.org/10.1063/1.4895648>
56. Malone MW, Yoder J, Hunter JF, Espy MA, Dickman LT, Nelson RO, et al. *In vivo* observation of tree drought response with low-field NMR and neutron imaging. *Front Plant Sci*. 2016;7. <https://doi.org/10.3389/fpls.2016.00564>
57. Nuix M. Développement d'un capteur RMN portable pour évaluer in situ l'état hydrique des racines de plantes prairiales [PhD thesis]. Université Clermont Auvergne; 2023. <https://hal.science/tel-04117099>
58. Sorin C, Mariette F, Musse M, Leport L, Cruz F, Yvin JC. Leaf development monitoring and early detection of water deficiency by low field nuclear magnetic resonance relaxation in nicotiana tabacum plants. *Appl Sci*. 2018;8(6):943. <https://doi.org/10.3390/app8060943>
59. Fukuda K, Kawaguchi D, Aihara T, Ogasa MY, Miki NH, Haishi T, et al. Vulnerability to cavitation differs between current-year and older xylem: non-destructive observation with a compact magnetic resonance imaging system of two deciduous diffuse-porous species. *Plant, Cell Environ*. 2015;38(12):2508–18. <https://doi.org/10.1111/pce.12510>
60. Umebayashi T, Fukuda K, Haishi T, Sotooka R, Zuhair S, Otsuki K. The developmental process of xylem embolisms in pine wilt disease monitored by multipoint imaging using compact magnetic resonance imaging. *Plant Physiol*. 2011;156(2):943–51. <https://doi.org/10.1104/pp.110.170282>
61. Utsuzawa S, Fukuda K, Sakaue D. Use of magnetic resonance microscopy for the nondestructive observation of xylem cavitation caused by pine wilt disease. *Phytopathology*. 2005;95(7):737–43. <https://doi.org/10.1094/PHYTO-95-0737>
62. Peuke AD, Gessler A, Trumbore S, Windt CW, Homan N, Gerkema E, et al. Phloem flow and sugar transport in *Ricinus communis* L. is inhibited under anoxic conditions of shoot or roots. *Plant Cell Environ*. 2015;38(3):433–47. <https://doi.org/10.1111/pce.12399>
63. Zhang Q, Li Q, Zhang G. Rapid determination of leaf water content using VIS/NIR spectroscopy analysis with wavelength selection. *Spectrosc Int J*. 2012;27:93–105. <https://doi.org/10.1155/2012/276795>
64. Utsumi Y, Sano Y, Fujikawa S, Funada R, Ohtani J. Visualization of cavitated vessels in winter and refilled vessels in spring in diffuse-porous trees by cryo-scanning electron microscopy. *Plant Physiol*. 1998;117(4):1463–71. <https://doi.org/10.1104/pp.117.4.1463>
65. Blaser SRGA, Schlüter S, Vetterlein D. How much is too much?—influence of X-ray dose on root growth of faba bean (*Vicia faba*) and barley (*Hordeum vulgare*). *PLoS ONE*. 2018;13(3):e0193669. <https://doi.org/10.1371/journal.pone.0193669>
66. Doussan C, Garrigues E. Measuring and imaging the soil-root-water system with a light transmission 2D technique. *Bio-Protoc*. 2019;9(6):e3190. <https://doi.org/10.21769/BioProtoc.3190>
67. Seeger S, Weiler M. Temporal dynamics of tree xylem water isotopes: *in situ* monitoring and modeling. *Biogeosciences*. 2021;18(15):4603–27. <https://doi.org/10.5194/bg-18-4603-2021>
68. Green SR, Clothier BE. Water use of kiwifruit vines and apple trees by the heat-pulse technique. *J Exp Bot*. 1988;39(1):115–23. <https://doi.org/10.1093/jxb/39.1.115>

Publisher's Note

Springer Nature remains neutral with regard to jurisdictional claims in published maps and institutional affiliations.